



Construction Manager at Risk Services

825 Tech Center Dr  
Elford, Inc

February 13, 2023

# Request for Proposals

- Pre-Construction Services – Phase I
  - Budget & Scheduling
  - Long-lead Times Items
  - Contractor Pre-qualifications
  - Guaranteed Maximum Price (GMPs)
- Construction Services – Phase II
  - Bidding & Awarding
  - Construction Management
  - Permitting & Inspections
  - Post-Construction & Warranty



## Responses

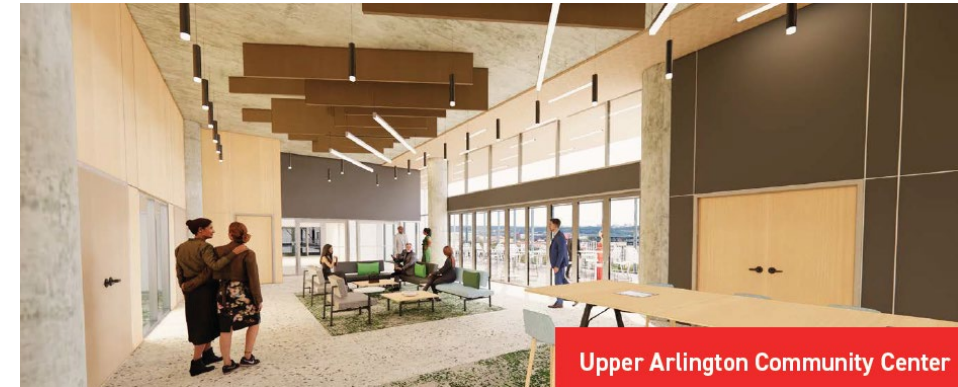
- 4 Responses Received
- Proposals Evaluated & Scored
- 4 Shortlisted\Interviewed
- Median Price Point - \$3.742M

# Experienced



Construction Manager at Risk

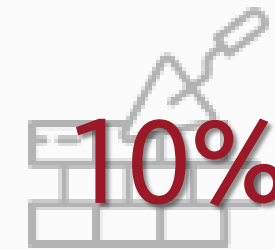
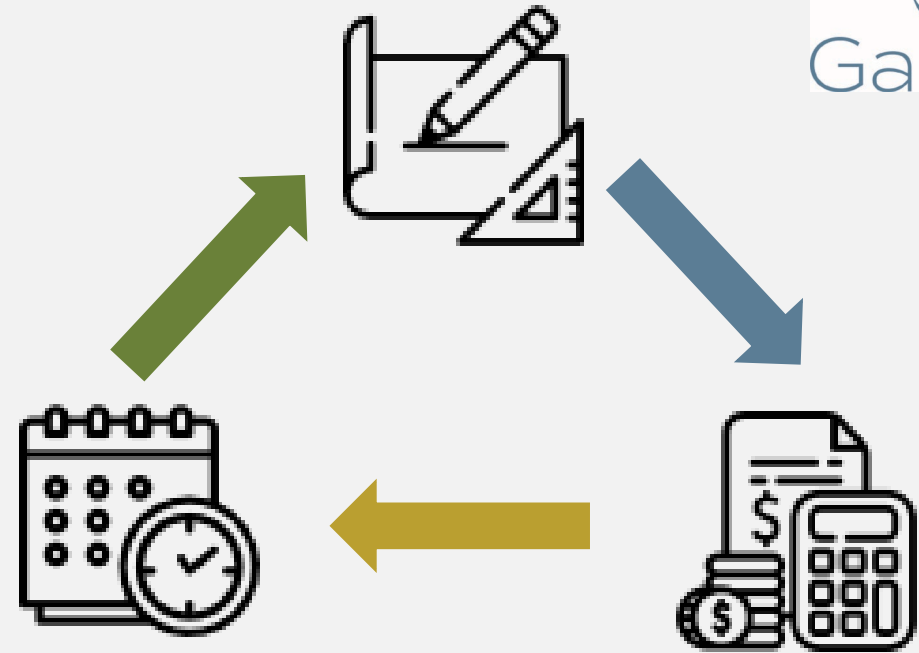
- Experience that Matches...
  - ✓ Multiple Business Sector Experience
  - ✓ Municipal Government Projects
  - ✓ Renovation & Expansion Projects
  - ✓ Assembling the Team
  - ✓ Importance of Relationships



# Design Team



Construction Manager at Risk



Construction



Electrical



Plumbing



HVAC



Technology

10% - 15% Diversity, Equity, Inclusion Goal

# Approach – Cost



Construction Manager at Risk

Phase 1 – Pre- Construction - **\$87,500**

Phase 2 – Construction

Construction Administration - **\$1,446,787**

General Conditions - **\$89,460**

Fees, Bonds, Insurance, Contingencies - **5.5% of GMP**



# Questions?



Construction Manager at Risk



Architect of Record