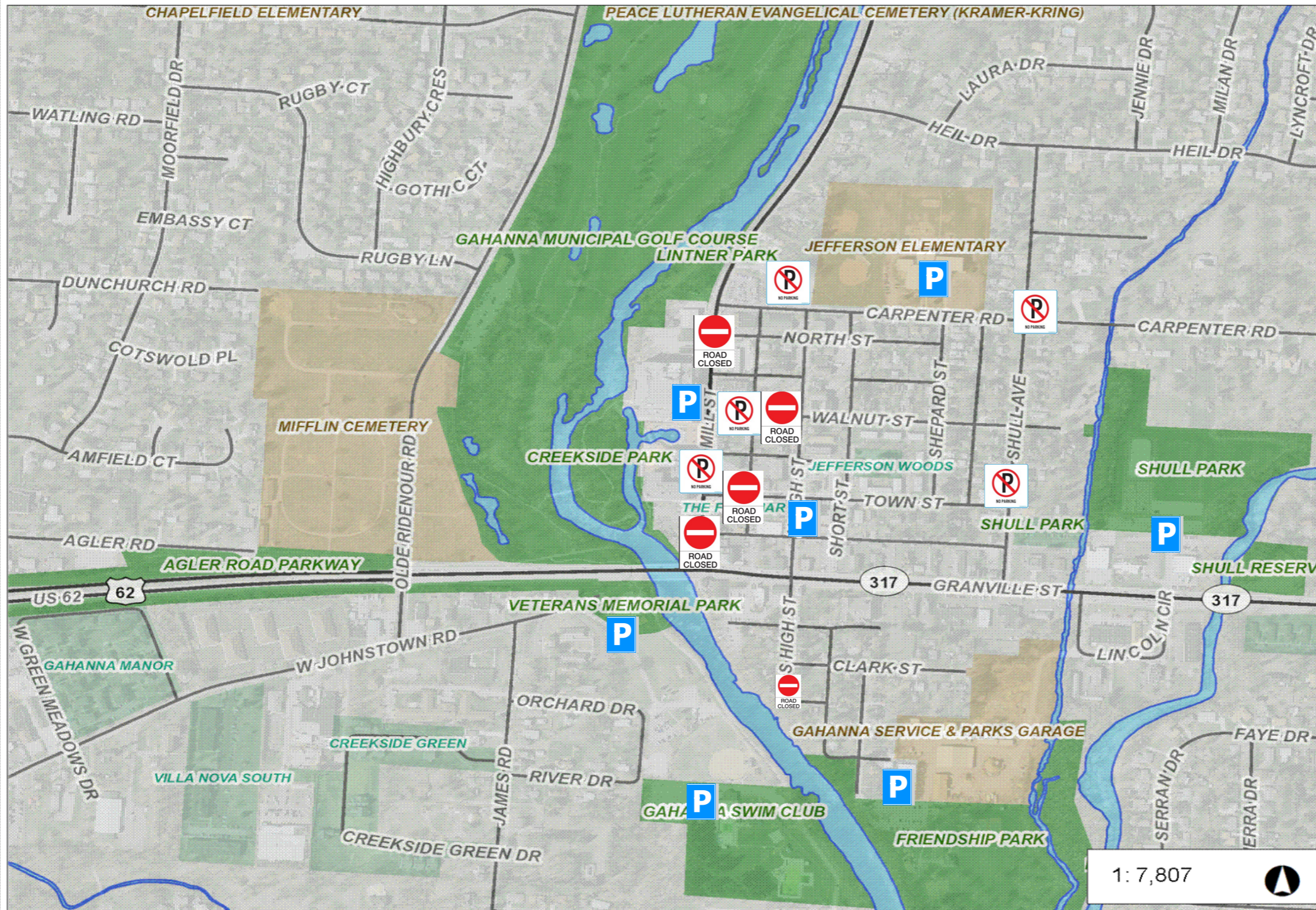


Creepside Street Closure & Parking Map



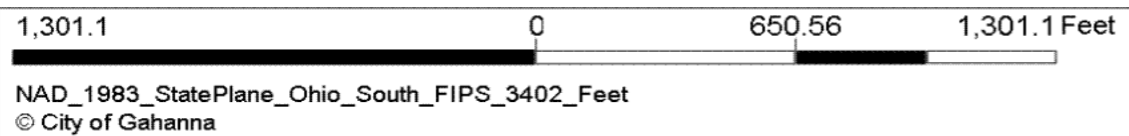
-  No street parking
 10/27/18; 5a-5p
 - Mill Street
 - Walnut St. (Mill to High)
 - Carpenter St.
 - Shull Avenue
 - Town St. to N. High

-  Street Closures
 10/27/18; 8a-5p:
 - Mill St. from Granville to North St.
 - Town St. from Mill to High St.
 - Walnut St. from Mill to High St.
 - Wilson & Latta Alley
 - S. High St. south of Clark St. to Fravel Alley

-  Free Parking Available:
 - Friendship Park
 - Vets Memorial Park
 - Gahanna Swimming Pool
 - Public lot near Sanctuary
 - High Street
 - Jefferson Elementary
 - Shull Park

- Pay parking
 - \$1 Garage on Mill Street (North entrance available)

Notes
 Please contact Gahanna Parks and Recreation with any questions at 614-342-4250.



This map is a user generated static output from an Internet mapping site and is for reference only. Data layers that appear on this map may or may not be accurate, current, or otherwise reliable.
 THIS MAP IS NOT TO BE USED FOR NAVIGATION

1: 7,807 